

CD45 (LCA) Mouse Monoclonal Antibody



天津三箭生物技术股份有限公司
Tianjin Sungene Biotech Co., Ltd.
标准 高效 稳定 Precision Efficient Stable

Market | 400-621-0003
marketing@sungenebiotech.com
Support | 022-66211636-8024
techsupport@sungenebiotech.com
Web | www.sungenebiotech.com

Important Note: Centrifuge before opening to ensure complete recovery of vial contents.
This product is guaranteed up to one year from purchase.

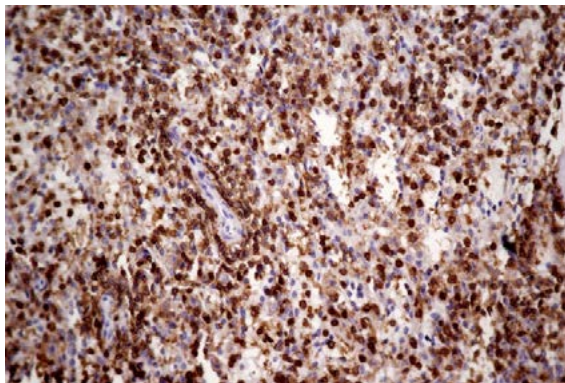
Purified Antibody Characterization

Clone	Isotype	Application	Reactivity
TSG16	Mouse IgG	IHC	Human

Description

LCA (CD45) is a family of single chain transmembrane glycoproteins consisting of at least four isoforms (220, 205, 190, 180kDa) which share a common large intracellular domain. Their extracellular domains are heavily glycosylated. The different isoforms are produced by alternative messenger RNA splicing of three exons of a single gene on chromosome 1. LCA (CD45) is expressed on cells of the human hematopoietic lineage (including hematopoietic stem cells) with the exception of mature red cells. It is not detected on differentiated cells of other tissues. It is likely that LCA (CD45) plays an important role in signal transduction, inhibition or upregulation of various immunological functions. Antibodies recognizing a common epitope on all of the isoforms are termed LCA (CD45).

Immunogen: Recombinant protein of human CD45.



Immunohistochemistry Staining of Human spleen with CD45 mouse mAb.

Product Information

Recommended dilution: IHC: 1/200-1/500

Optimal dilutions/concentrations should be determined by the end user.

Form: Liquid

Concentration: 0.2 mg/ml in PBS, pH 7.4, containing 0.02% sodium azide and 50% glycerol.

Storage instructions: CD45 antibody is stable for 1 month at 2-8°C. For long term storage, aliquot and store at -20°C or below. Avoid repeated freezing and thawing cycles.

For research use only and not for diagnostic or therapeutic use!